

The Exors. of the late

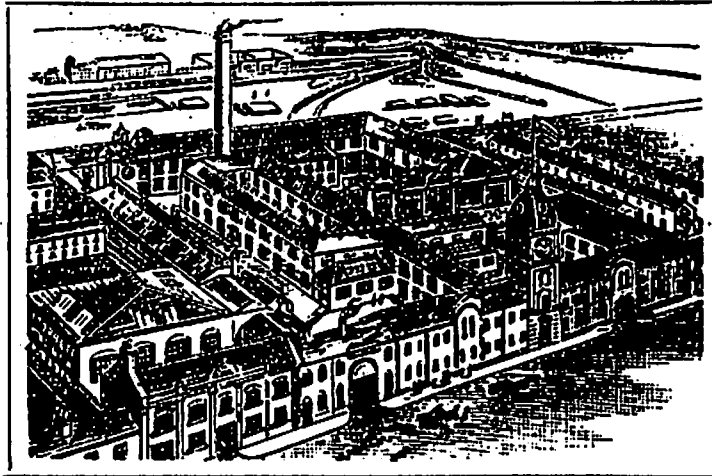
# THOMAS CORBETT,

Executors S. E. Corbett, E. E. Dawson, H. H. Humphries.

**PERSEVERANCE IRON WORKS, SHREWSBURY,**

**HOLD MORE THAN 800 R.A.S.E. and other FIRST PRIZES,  
GOLD and SILVER MEDALS, etc., for Superior and Practicable Manufactures.**

All Corbett's  
Manufactures  
are special  
Favourites  
Everywhere  
and are  
Guaranteed  
to work  
Satisfactorily.



Makers of  
Corn & Seed  
Dressing  
Machines,  
Seed Drills,  
Curd Mills,  
Cheese Presses,  
Ploughs,  
Horse Hoes,  
Food  
Preparing  
Machinery,  
etc.

The Perseverance Implement Works.

LISTS AND PRICES ON APPLICATION.

Telegrams—"CORBETT SHREWSBURY."

Telephone 117

## S. EDWIN CORBETT'S RETAIL IMPLEMENT WAREHOUSE

(Opposite Railway Station)

Contains  
one of the  
Largest  
and  
most  
up-to-date  
Collections of  
Agricultural  
Implements  
etc.,  
in Great  
Britain.

Can  
supply  
all Leading  
Makers'  
Machines  
and  
Implements.



Wearing  
Parts  
for the  
Leading  
Harvesting  
Machines,  
Ploughs,  
etc.

Sole Agents  
for District  
for  
the Famous  
Massey Harris  
Binders,  
etc.

This is copied from a 1922 Shrewsbury street gazetteer showing  
Thomas Corbett's Perseverance Iron Works and Warehouse.

E.G.E.